

25 Beautiful HOMES

MAY
2009

£3.50
US \$8.50
AUS \$8.50
NZ \$12.95

Take a tour of...

25 DREAM PROPERTIES

and discover how to create
your own beautiful home

THE BEST
REAL HOMES
MAGAZINE

*Fresh
& simple*

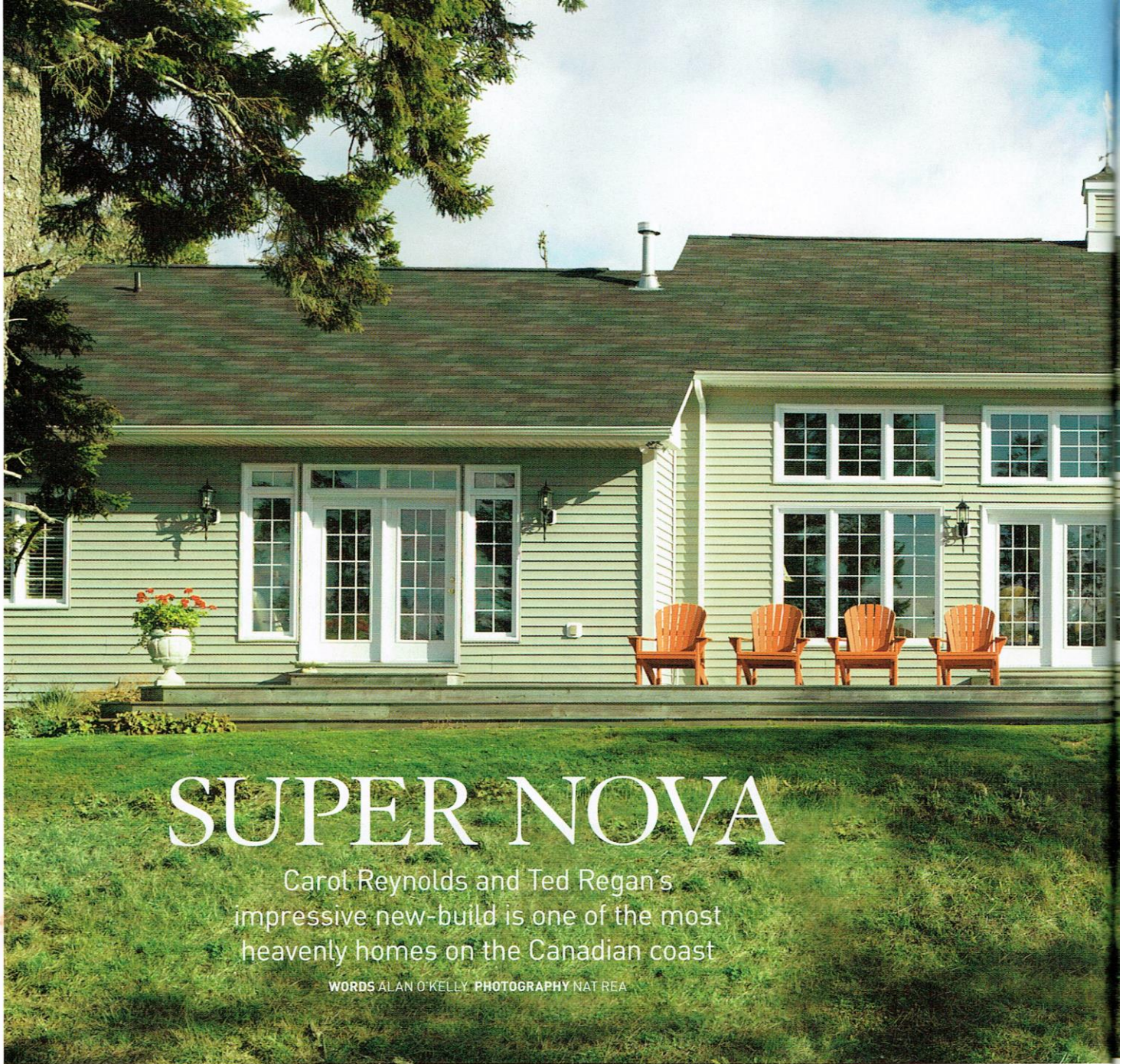
Chateau-chic
style in this
London villa

WIN
A LUXURY
BATHROOM
WORTH
£2,000

The best... Barns • New-builds • Apartments
• Detached houses • Terraces • Semis



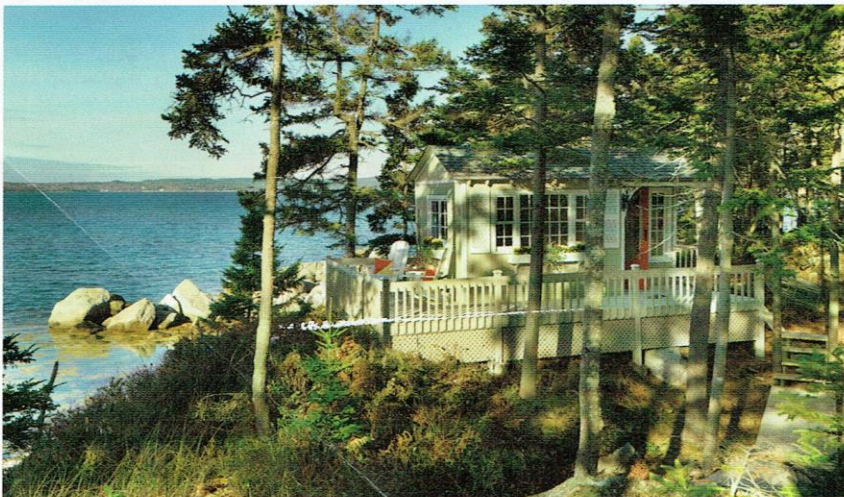
Retail 30/4/09



SUPER NOVA

Carol Reynolds and Ted Regan's impressive new-build is one of the most heavenly homes on the Canadian coast

WORDS ALAN O'KELLY PHOTOGRAPHY NAT REA





MEET THE OWNERS

Carol Reynolds, an estate agent, and her husband Ted Regan, a TV producer and director

PREVIOUS HOME 'Our last place was a townhouse in Toronto,' says Carol.

CURRENT PROPERTY New-build house in Nova Scotia, Canada

ROOMS Hall, sitting/dining room, kitchen, office, cloakroom, utility room, three bedrooms (one en suite), dressing room, bathroom, terrace

BUILT 2002 VALUE £700,000

The oceanfront location of Carol Reynolds and Ted Regan's home in Nova Scotia took them two years to find, but it was worth the wait. 'We were attracted to this site for many reasons,' says Carol. 'Its rugged landscape is stunning, the sunsets across the water are glorious, and we were also impressed with all the lovely villages nearby.'

Carol and Ted had been scouring the coast of the Canadian province for a new home. 'We'd started our search at the bottom of the peninsula and worked our way 130 miles along the shoreline,' recalls Carol, who decided they should build a property from scratch when she realised she hadn't been truly impressed by any property they had seen.

With their ideal plot secured, Carol arranged for the land to be cleared of trees, while Ted worked ►

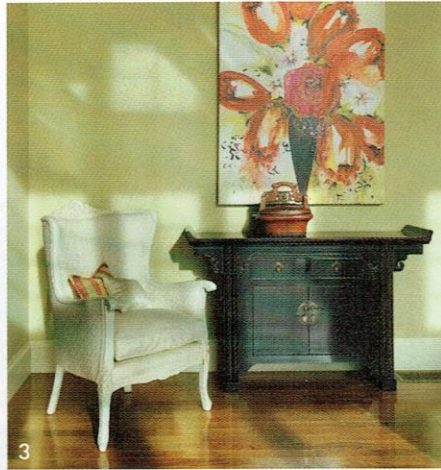


1 & 3 SITTING ROOM Carol adores the glass-topped console and coffee tables, which she bought at Canadian department store Sears (sears.ca); find similar at Tom Faulkner (020 7713 5767). Rounded arms and simple lines lend the sofa and wing chair their classic looks. Again, these pieces were sourced in Canada, but Multiyork (0800 040 7171) sells seating in the same style, while Andrew Martin's (020 7225 5100) Art 210 armchair is a good match for the one Carol found in Istanbul

2 DINING ROOM American company Bernhardt (bernhardt.com) made the couple's dining table and chairs, though The Dining Room Shop (020 8878 1020) is a source of comparable designs here in the UK

4 KITCHEN Builder Keith Sawler's team created the units. The Saturday Shop (01373 452772) supplies bespoke painted cabinetry and granite worktops





FAVOURITE ASPECT *'We love the way our home is both elegant and casual – Ted says he feels equally comfortable wearing jeans or a tuxedo here'*



on the design of their new home with their contractor Keith Sawler. 'Once we'd decided what we wanted to achieve, the building process was fast and surprisingly straightforward,' says Carol. 'We have Keith to thank for that, and the first-class group of tradespeople working with him.'

In fact, Carol and Ted's relationship with Keith was so good that when the couple realised the team were planning to work over Christmas and New Year to meet their January deadline, they moved the completion date on a month. 'Keith was so grateful, he offered to cover the extra payment on the property we were renting,' says Carol. 'It meant everyone could enjoy the holidays, including us.'

To allow for future expansion, the house has been given a flexible, open-plan layout, while banks of huge windows offer an expansive view

of the impressive landscape. This is especially true of the kitchen, dining area and sitting room, which lead from one area to the next seamlessly. 'Because of the abundance of glass, these rooms are flooded with sunshine all year round,' says Carol. 'It really lifts the spirits, and also means the place is lovely and cosy in winter. In summer we open up the windows to let in the sea breezes.'

The airy atmosphere of this space – Carol and Ted refer to it as the 'great room' – is enhanced by its decor. 'We kept to a pale colour palette,' Carol explains. 'This allows the ever-changing tones of the sea and sky to dictate the mood.'

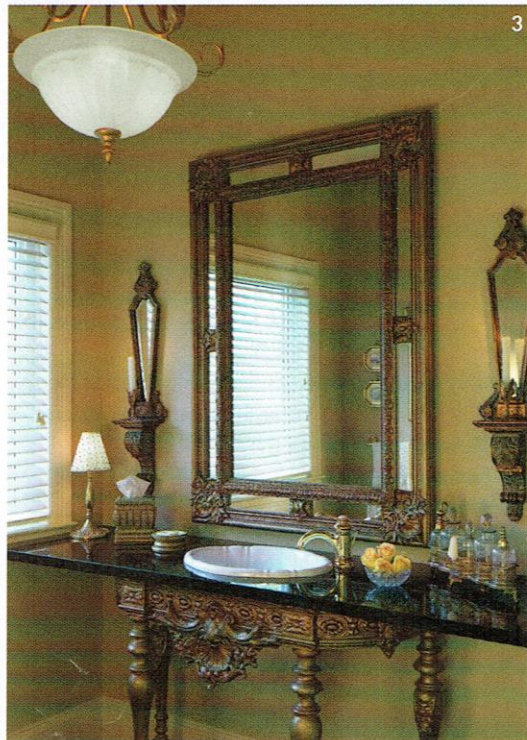
Keith's team made the elegant kitchen units in a garage on site, while the rest of the furniture is an eclectic mix of antiques and more modern pieces picked out by Carol. Her favourites include an ►

antique armchair that she had shipped over from a bazaar in Istanbul and then re-covered in white fabric, and a glass-topped coffee table, which she loves for the contrast it creates.

This counterbalance of chic and cosy continues in the bedrooms. Walls painted in citrus tones take on a fresh glow when the sunlight reflects off them, yet cosset Carol, Ted and their guests at night. In the master bedroom, a four-poster metal bed has a fairytale charm to match the stunning views, while the adjacent bathroom features a glamorous vanity unit. 'It was made from another of our Istanbul finds – an ornate 19th-century table,' says Carol. 'We had it topped with granite, which was cut with a hole to accommodate a sink.'

As well as being aesthetically beautiful, the house that Carol and Ted have created is an eco-friendly dream. It is heated by an economical electric heat pump, and every window is filled with argon, which prevents heat from transferring through the glass. 'We've achieved our goal of designing a home that respects its lush surroundings, both in its looks and its environmentally friendly credentials,' smiles Carol. 'This location deserved nothing less – it surely rivals any backyard in the world.' **BH**

FAVOURITE ROOM *'Our bedroom is full of light – and what a great view to wake up to'*



1 & 2 MASTER BEDROOM A quiet corner serves as a study area: the desk is a family heirloom; for a similar antique chair, try Appley Hoare Antiques [020 7730 7070]. Nights in Iron [01963 32994] sells four-poster beds in the style of Carol and Ted's, and Dulux's [0870 444 1111] Lime Zest 4 is a good match for the walls
3 BATHROOM The couple's vanity unit was made from an antique table; The Original Washstand Company [0117 972 3720] creates equally ornate pieces. Tony Williams [01400 273688] deals in antique mirrors and wall sconces



INSPIRED BUYS

Carol and Ted's home is the ideal place for quiet contemplation. Prompted by their chic writing desk, we went in search of similar investment pieces



▲ Art Deco writing table in Bombay rosewood, from £7,139, Restall Brown & Clennell [020 7627 1298, rbc-furniture.co.uk]



▲ Cherry desk circa 1880, £1,295, Alexander Paul Antiques [01404 851298, alexanderpaulantiques.com]



▲ Chateau writing desk in cherry with leather inlay, £1,295, Multiyork [0800 040 7171, multiyork.co.uk]